

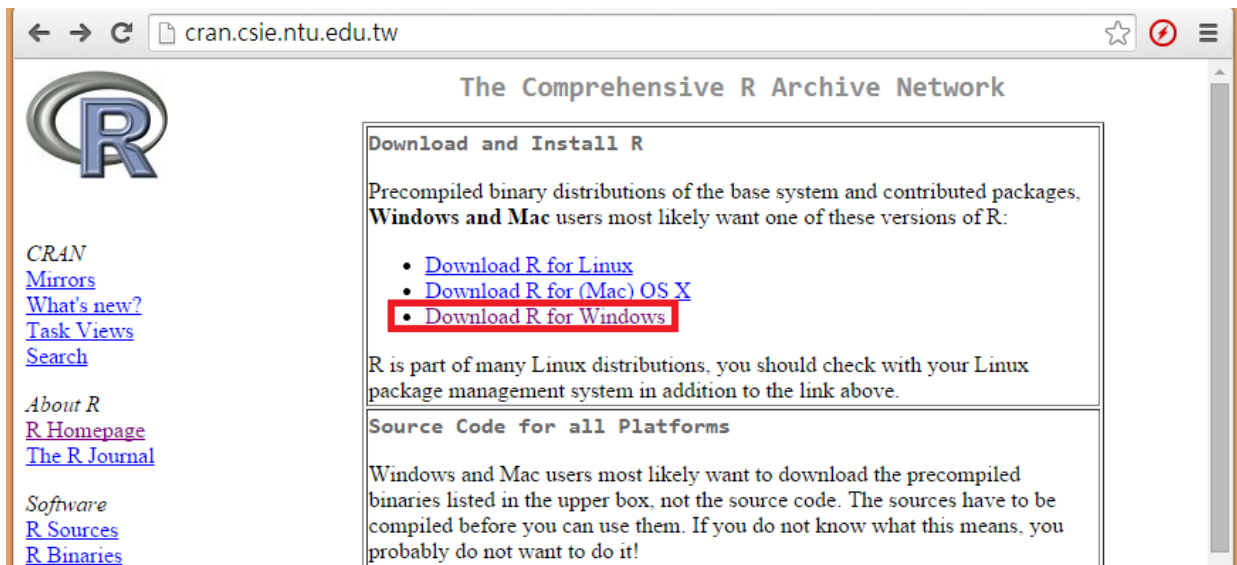
# R Installation and GUI Setup

Jeff Lee (李維哲) Share Lin (林怡安)<sup>1</sup>

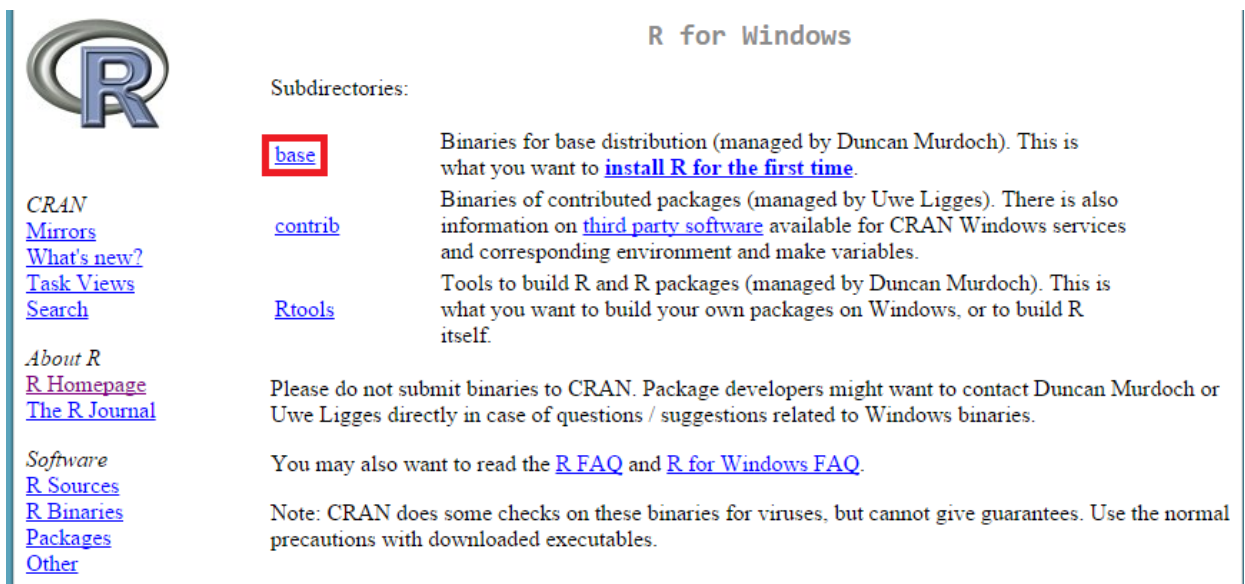
December 21, 2015

## 1. Installation

1. Go to <http://cran.csie.ntu.edu.tw>.<sup>2</sup> Click "Download R for Windows."



2. Click "base."



<sup>1</sup> Department of Information Management, National Taiwan University; {r94725023, r94725037}@ntu.edu.tw.

<sup>2</sup> This is the closest mirror site when you are in National Taiwan University. Go to <http://cran.r-project.org/mirrors.html> for other mirror sites.

3. Click "Download R 3.2.3 for Windows."



### R-3.2.3 for Windows (32/64 bit)

[Download R 3.2.3 for Windows](#) (62 megabytes, 32/64 bit)

[Installation and other instructions](#)

[New features in this version](#)

[CRAN](#)

[Mirrors](#)

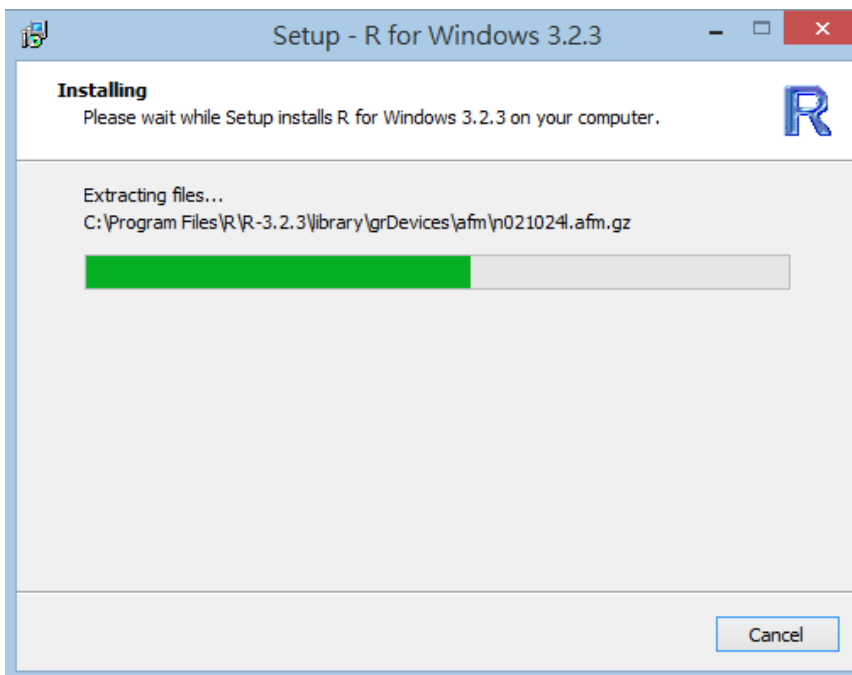
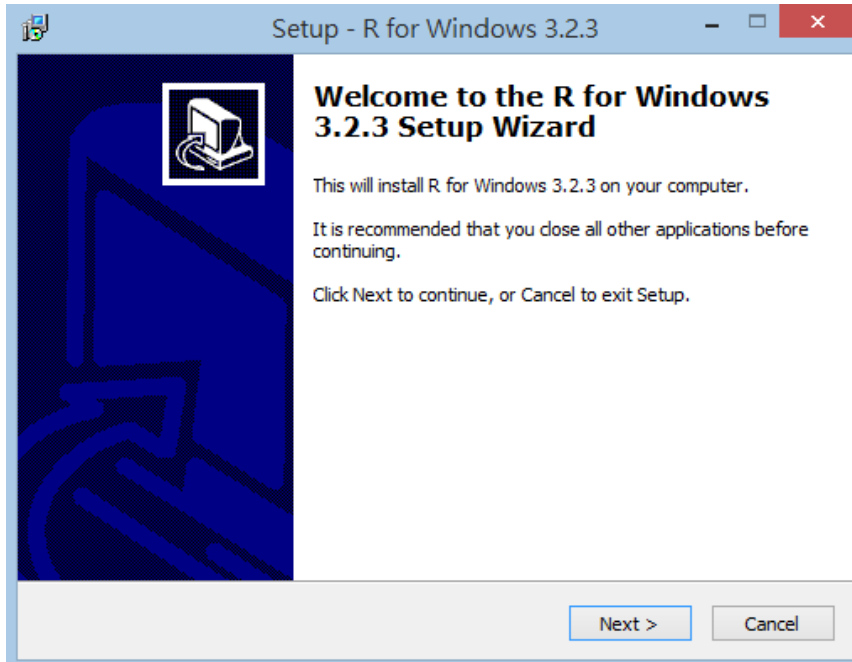
[What's new?](#)

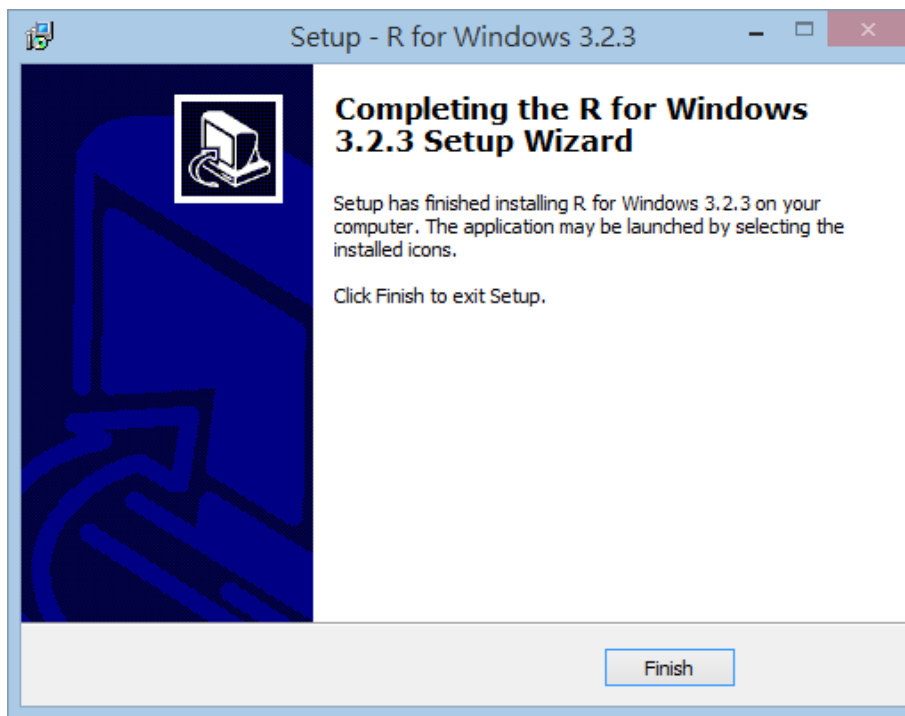
[Task Views](#)

[Search](#)

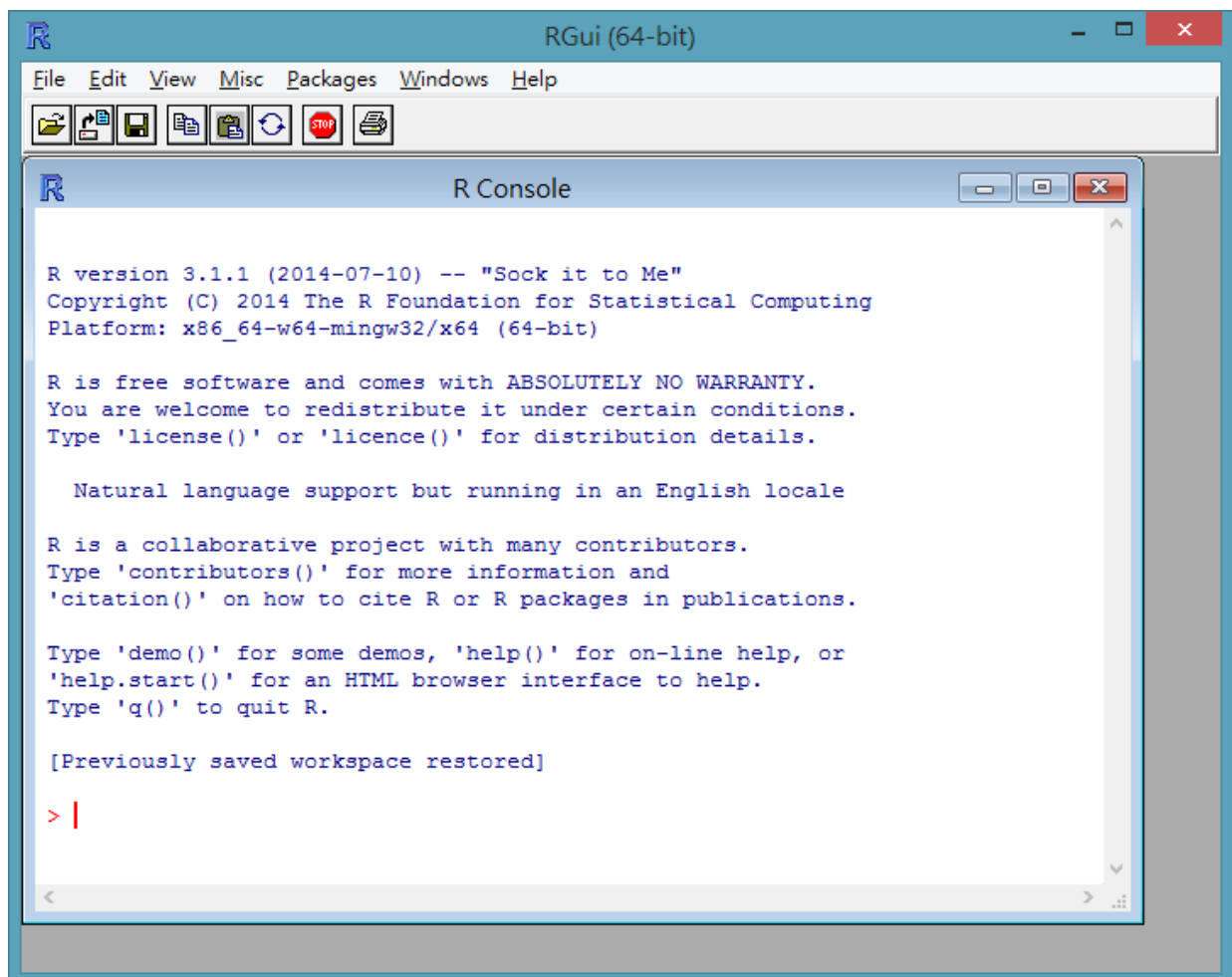
If you want to double-check that the package you have downloaded exactly matches the package distributed by R, you can compare the [md5sum](#) of the .exe to the [true fingerprint](#). You will need a version of md5sum for windows: both [graphical](#) and [command line versions](#) are available.

4. Double click the file you just downloaded. Then click "Next" until the process finishes.





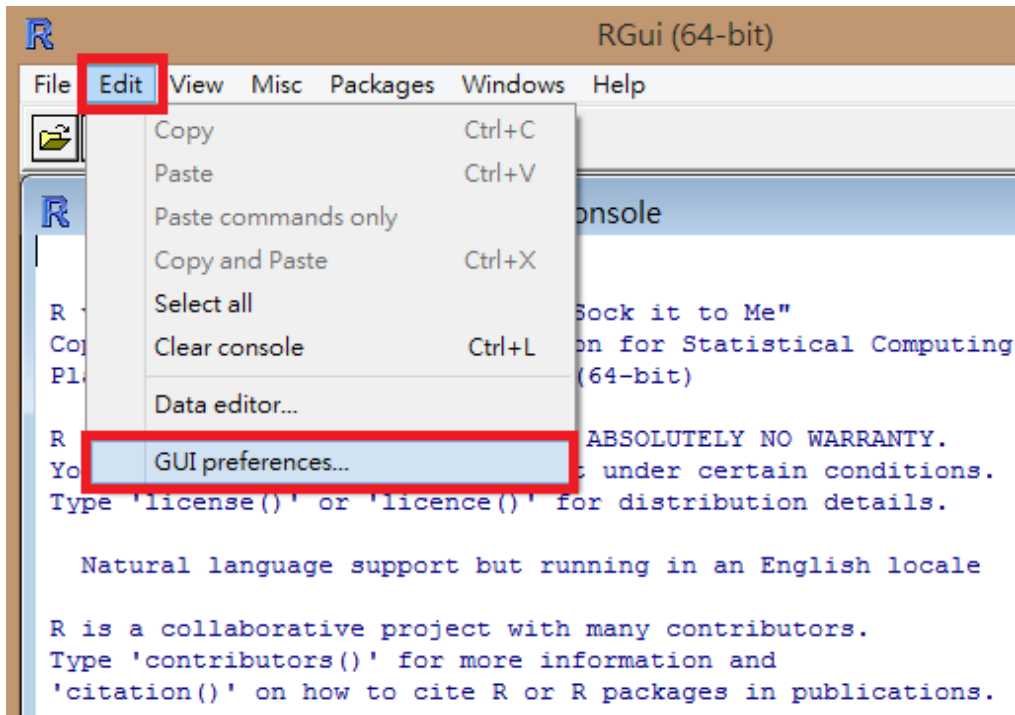
5. Click the shortcut to run the R GUI.<sup>3</sup>



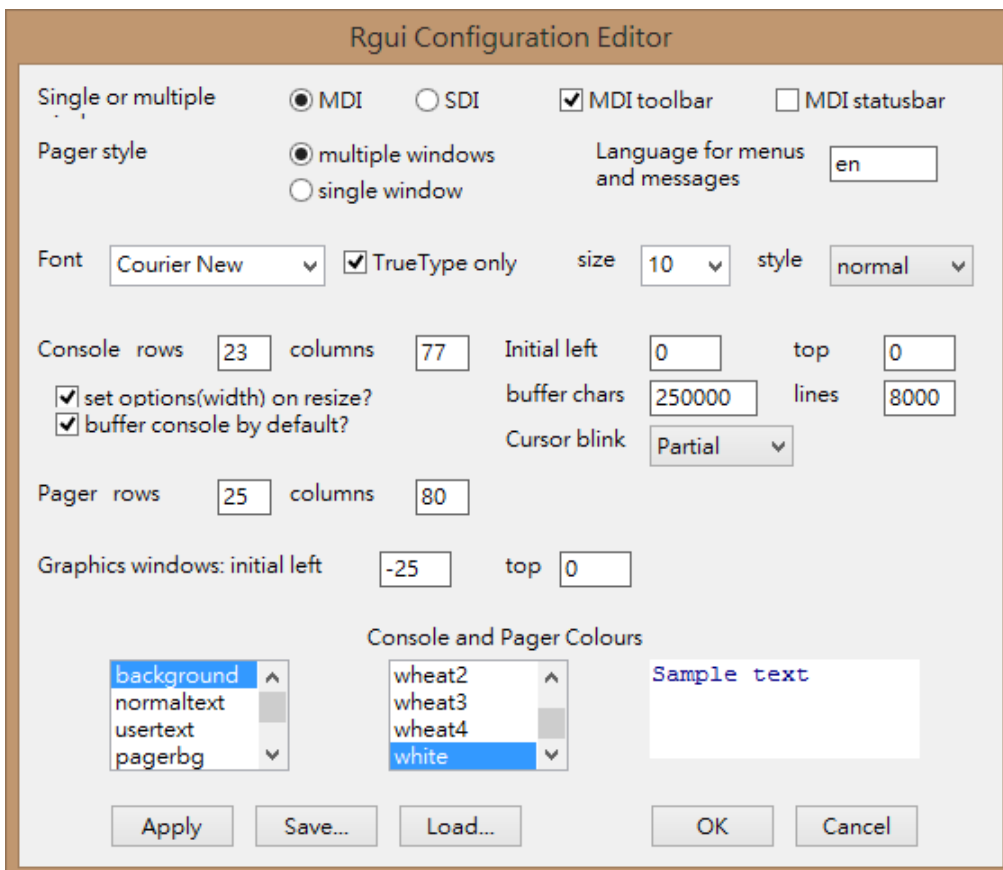
<sup>3</sup> GUI is the abbreviation of Graphical User Interface.

## 2. GUI Setup

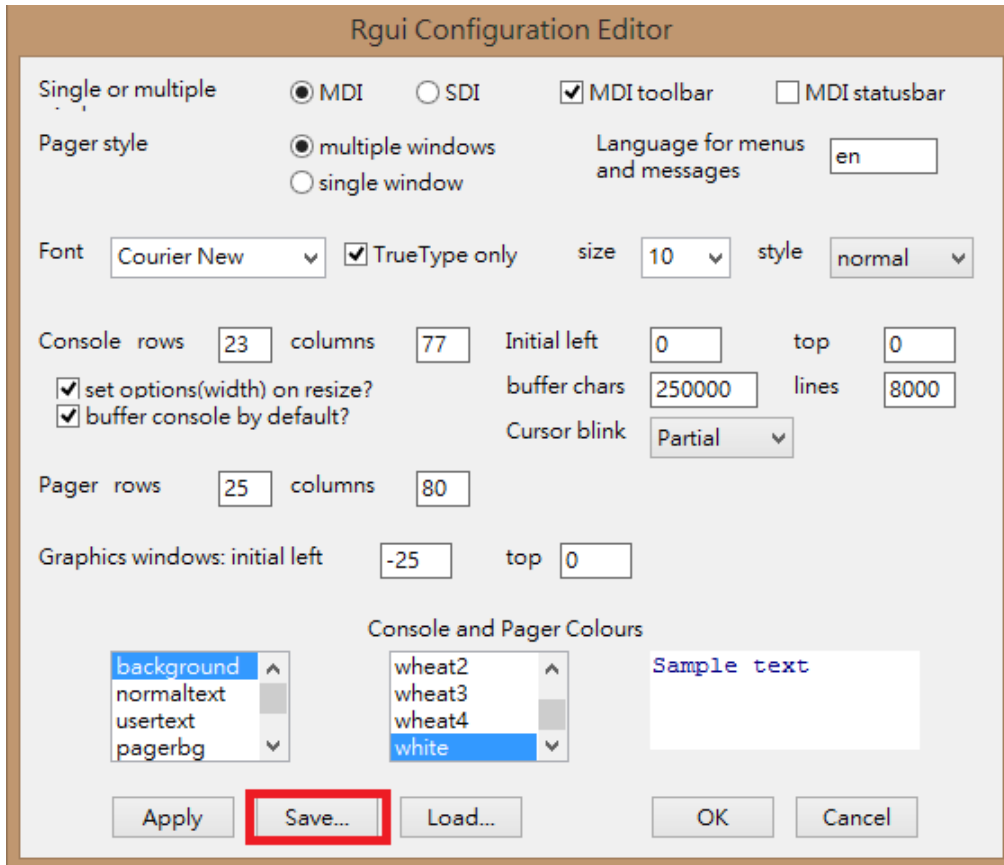
1. You may change your editor environment (or simply use the default setting):
  - a. Click "Edit" and then "GUI preferences..."



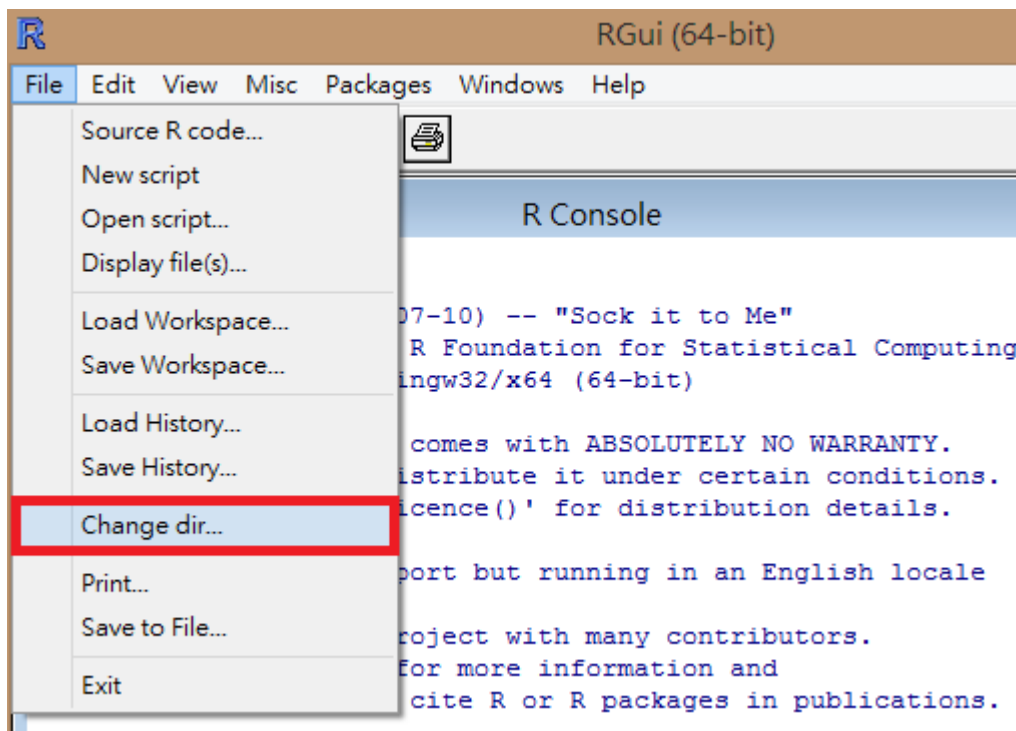
- b. You may change the font size, background color, text color, etc.



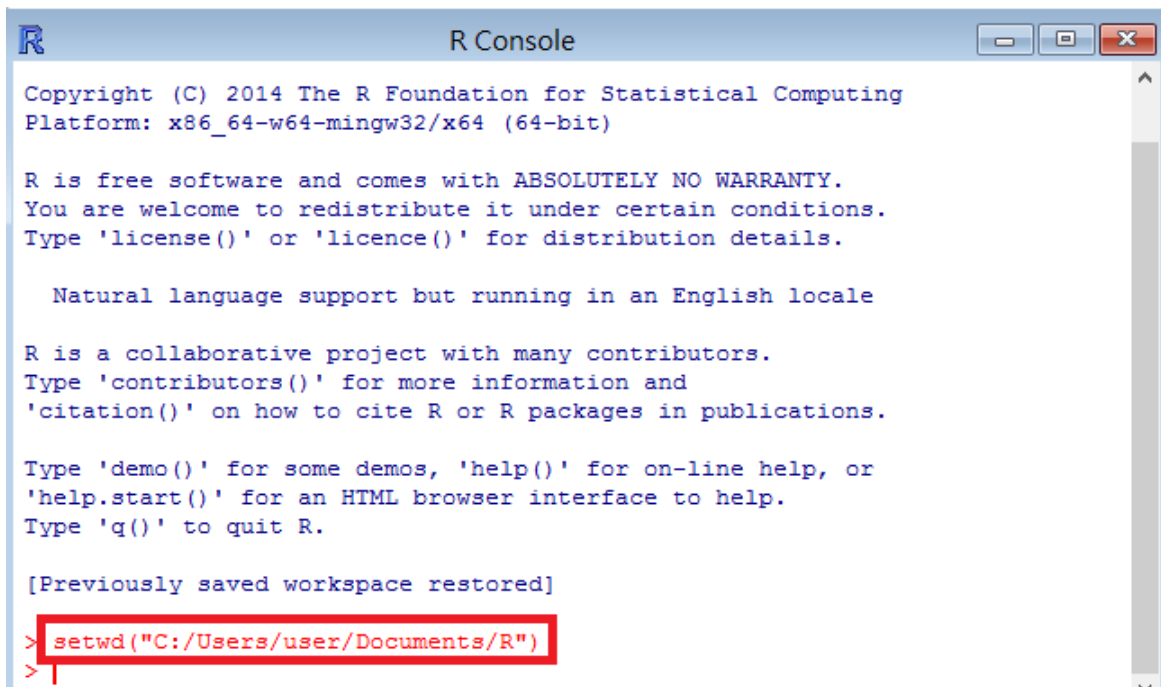
- c. Save your console setting file so that in the future you may load it.



2. Always set up your "work directory" before you start to work:
- The first way is to click "File" and then "Change directory...". Then browse to select the directory (folder) that you prefer to be the default location for saving and loading files.



- b. The second way is to type `setwd("C:/Users/user/Documents/R")`, where the path specified inside the double quotation marks should be replaced by the path you prefer.<sup>4</sup>



```
R Console
Copyright (C) 2014 The R Foundation for Statistical Computing
Platform: x86_64-w64-mingw32/x64 (64-bit)

R is free software and comes with ABSOLUTELY NO WARRANTY.
You are welcome to redistribute it under certain conditions.
Type 'license()' or 'licence()' for distribution details.

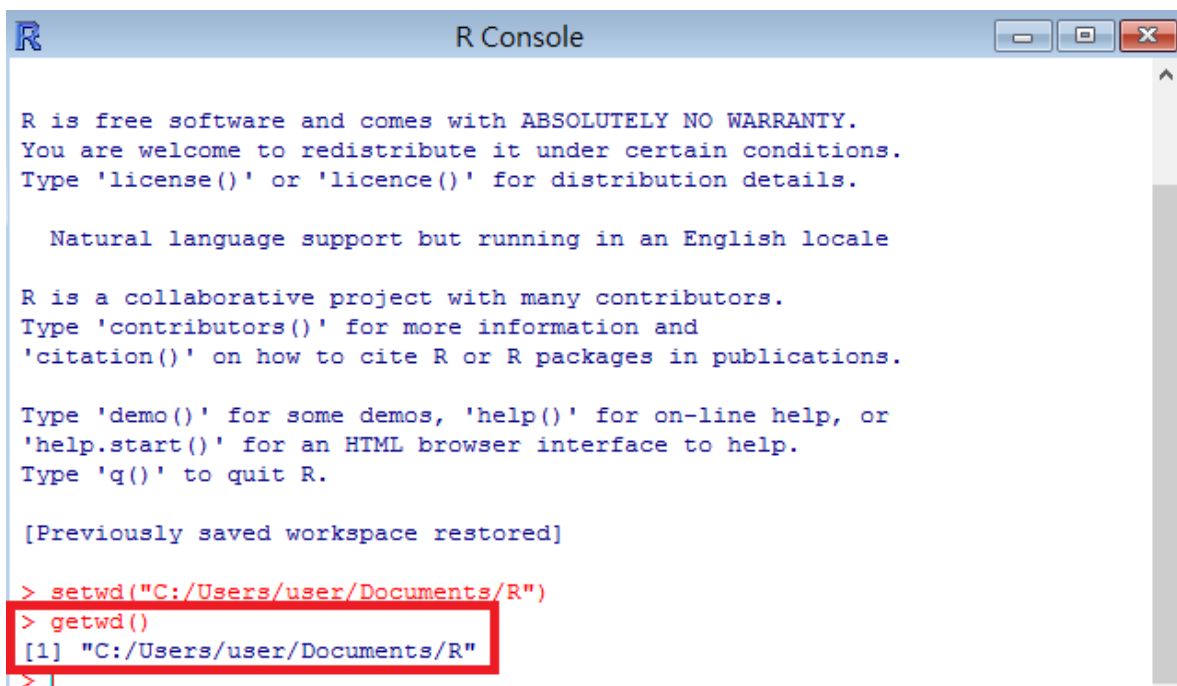
Natural language support but running in an English locale

R is a collaborative project with many contributors.
Type 'contributors()' for more information and
'citation()' on how to cite R or R packages in publications.

Type 'demo()' for some demos, 'help()' for on-line help, or
'help.start()' for an HTML browser interface to help.
Type 'q()' to quit R.

[Previously saved workspace restored]
> setwd("C:/Users/user/Documents/R")
>
```

- c. To make sure that it works, type `getwd()` to see the current work directory.



```
R Console
R is free software and comes with ABSOLUTELY NO WARRANTY.
You are welcome to redistribute it under certain conditions.
Type 'license()' or 'licence()' for distribution details.

Natural language support but running in an English locale

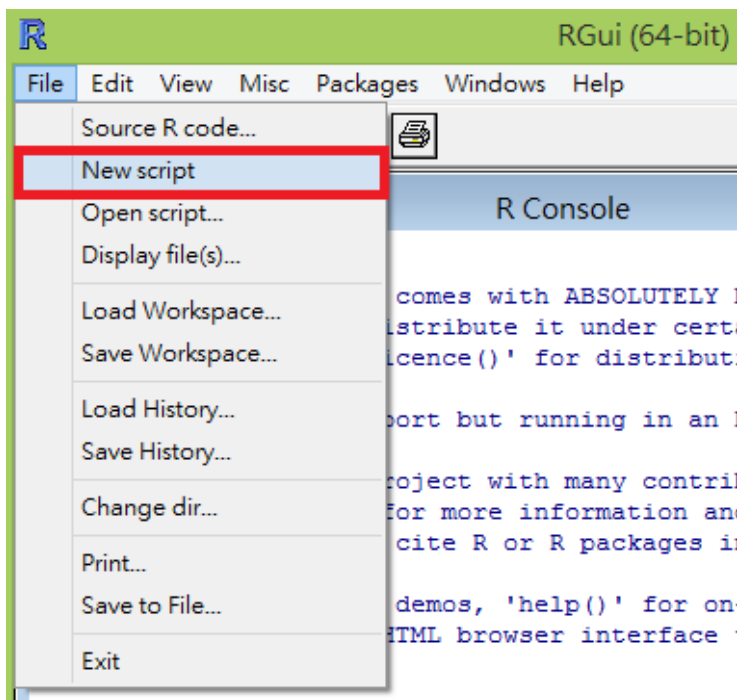
R is a collaborative project with many contributors.
Type 'contributors()' for more information and
'citation()' on how to cite R or R packages in publications.

Type 'demo()' for some demos, 'help()' for on-line help, or
'help.start()' for an HTML browser interface to help.
Type 'q()' to quit R.

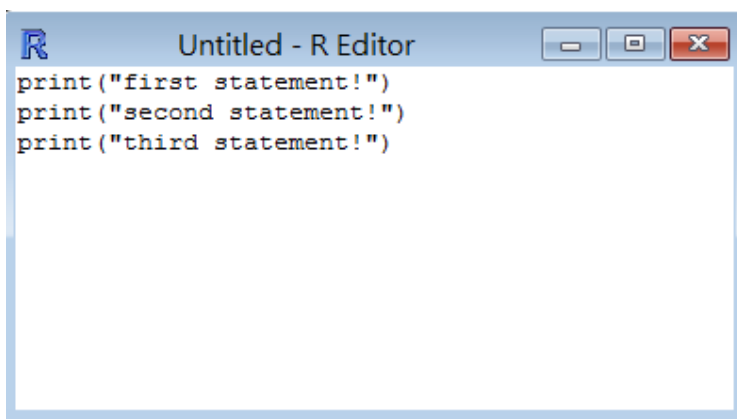
[Previously saved workspace restored]
> setwd("C:/Users/user/Documents/R")
> getwd()
[1] "C:/Users/user/Documents/R"
>
```

<sup>4</sup> For specifying the work directory, one may alternatively use backslashes (`\`). However, as we will explain in the future, to express a backslash in an R string, one needs to write TWO consecutive backslashes (`\\`). For example, one may type `setwd("C:\\Users\\user\\Documents\\R")` for the same effect.

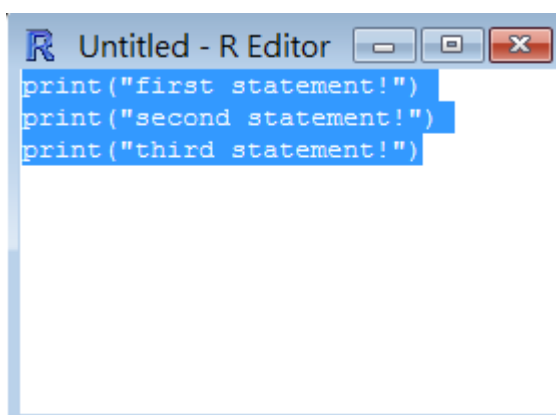
3. You may create a new script file to store your R statements:
- Click "File" and then "New script."

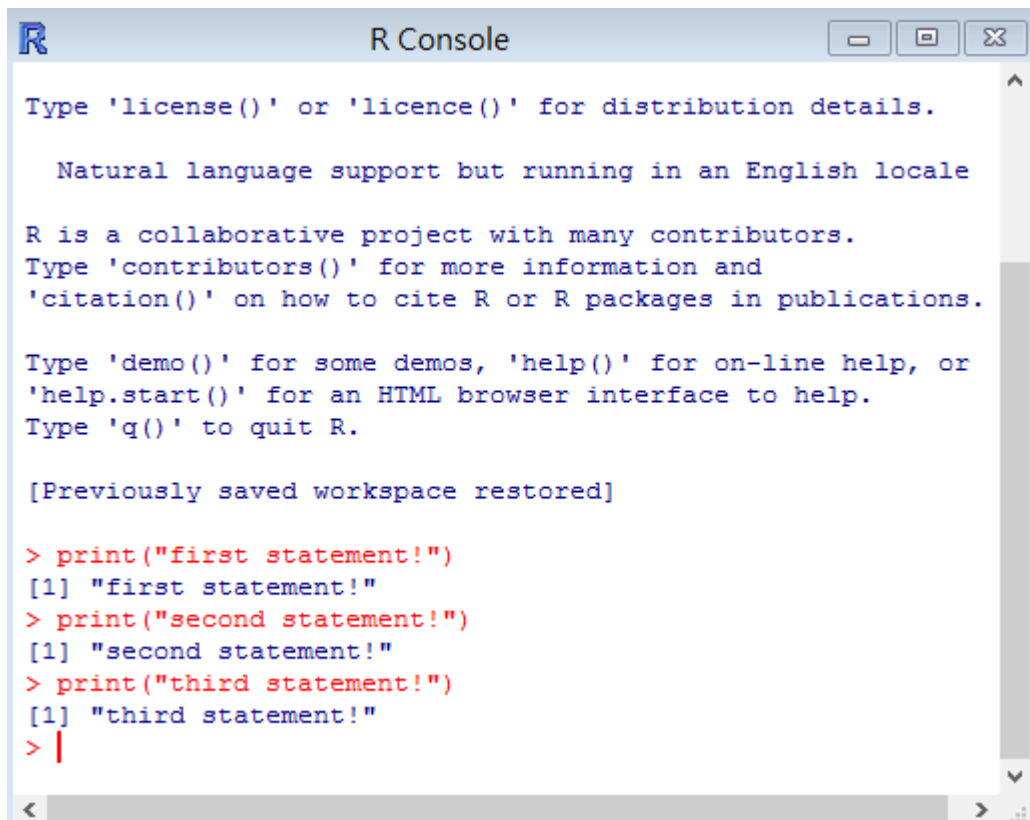


- Type several statements, one in a single line.



- Select those statements that you want to execute and then press "CTRL + R" to execute them at once in order.





```
R Console

Type 'license()' or 'licence()' for distribution details.

Natural language support but running in an English locale

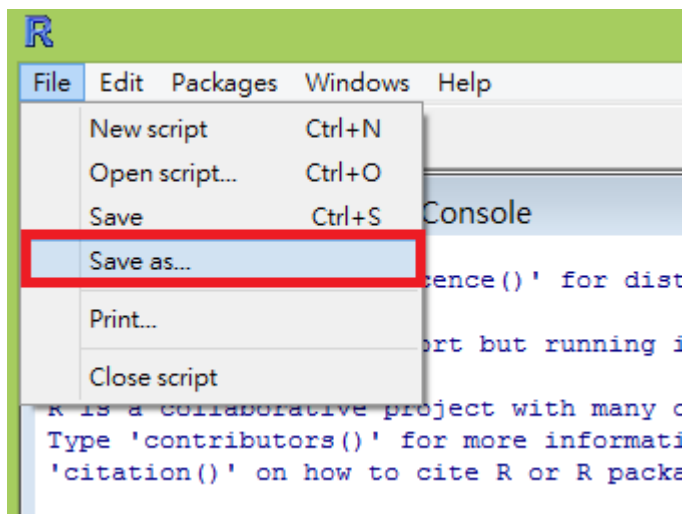
R is a collaborative project with many contributors.
Type 'contributors()' for more information and
'citation()' on how to cite R or R packages in publications.

Type 'demo()' for some demos, 'help()' for on-line help, or
'help.start()' for an HTML browser interface to help.
Type 'q()' to quit R.

[Previously saved workspace restored]

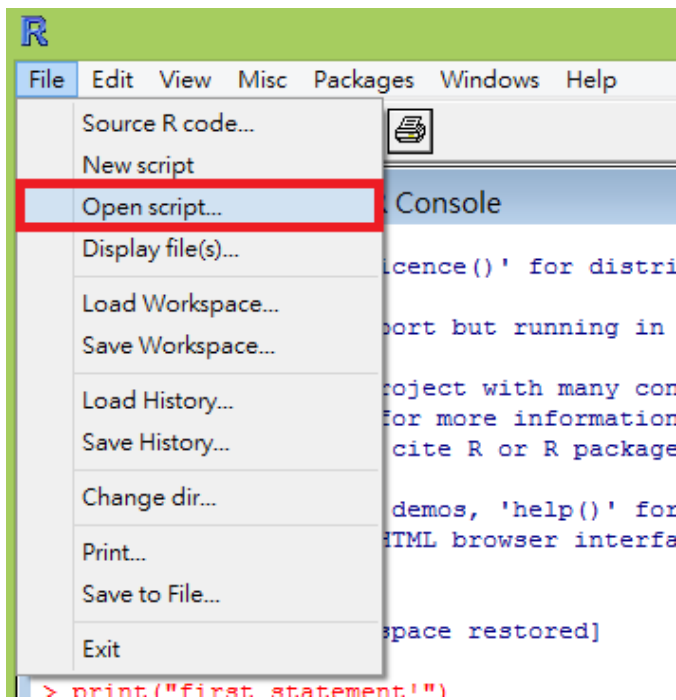
> print("first statement!")
[1] "first statement!"
> print("second statement!")
[1] "second statement!"
> print("third statement!")
[1] "third statement!"
> |
```

d. Save it for future use: Click "File" and then "Save as...". Give the script file a name.

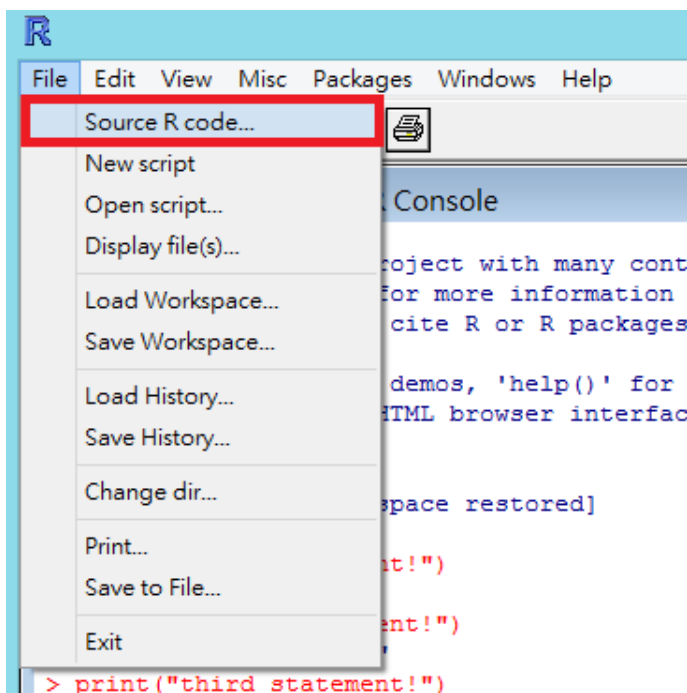




4. You may reload your previously saved script file:
  - a. Click "File" and then "Open script..." or the directory icon. Browse to select a file.



- b. If you choose "Source R code...", those R statements in the script file will be executed directly.



### 3. More advanced settings

For more information, check <http://cran.r-project.org/bin/windows/base/rw-FAQ.html> or many other online documents.