

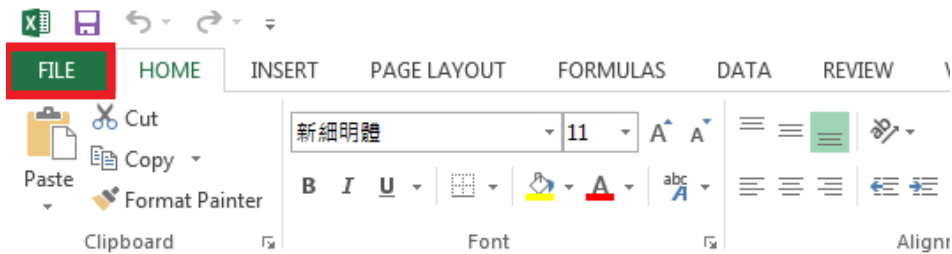
# Data Analysis in MS Excel

November 28, 2015

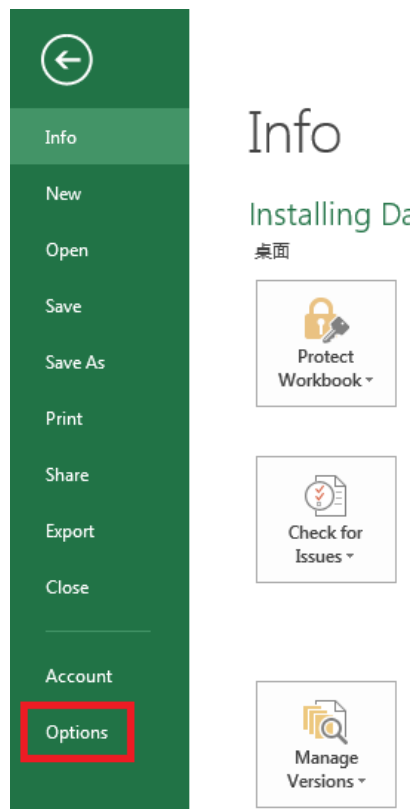
## 1. For Windows Users

For Windows users, please follow the steps below to activate the Excel add-in “Data Analysis,” which contains the regression model that we need for this course. Different versions of Excel may adopt different ways for installing the add-in. If the following instructions do not help you, please try to search online for help.

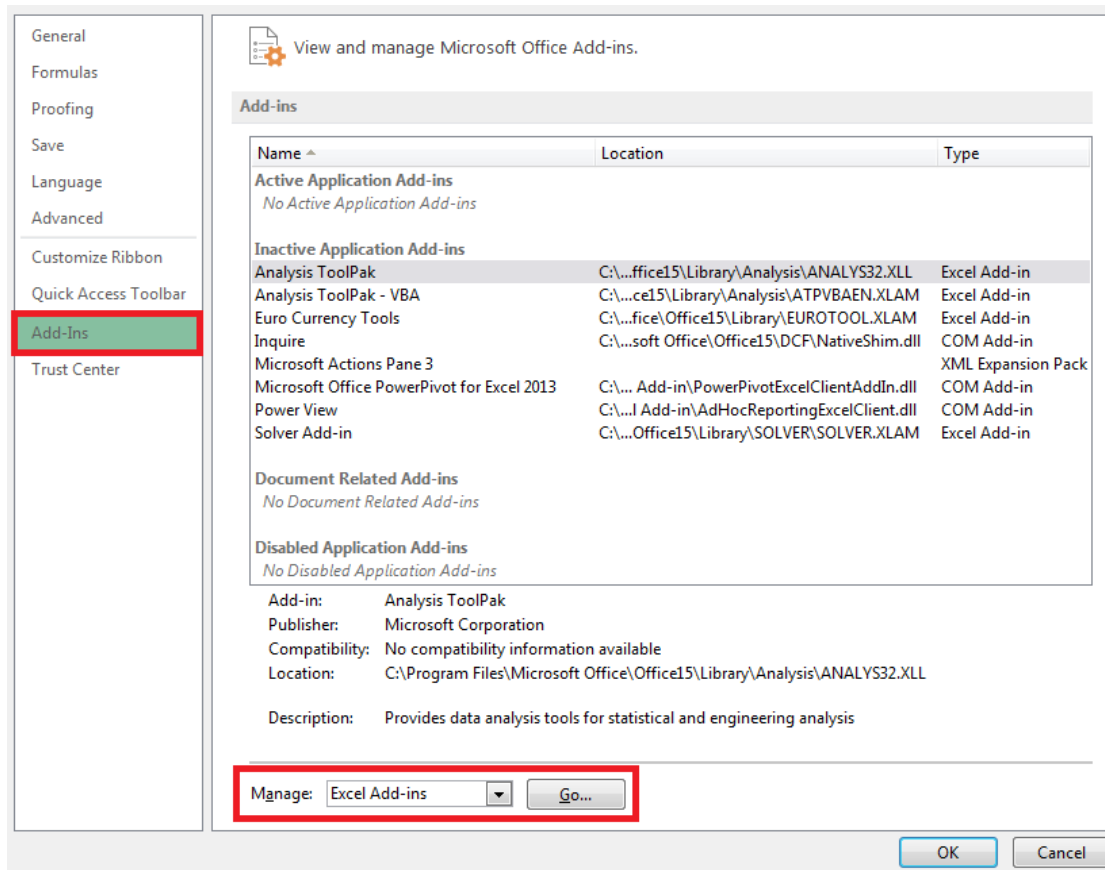
1. Click on the “File” tab.



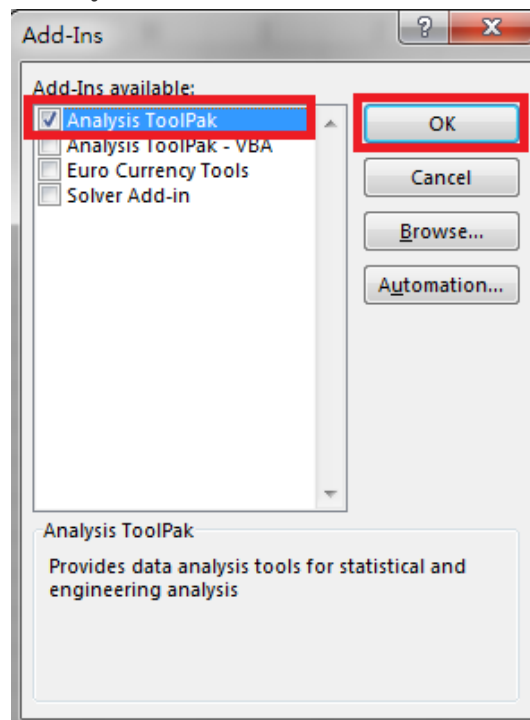
2. Click “Options”.



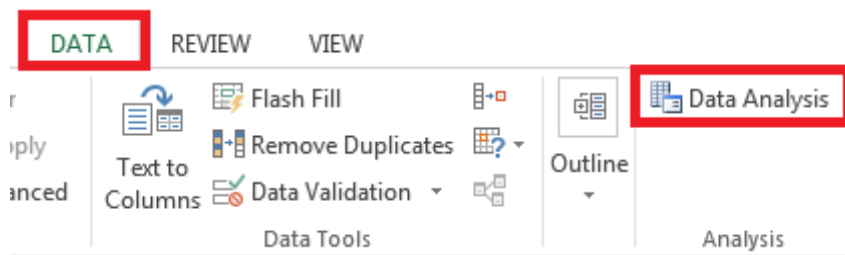
3. Click “Add-Ins”, select “Excel Add-Ins” from the drop-down menu, and then click the “Go” button.



4. Add a checkmark in the “Analysis ToolPak” and then click **OK**.



5. After completing the steps above, the “Data Analysis” Add-Ins will be available in the “Data” tab.



## 2. For Mac Users

Unfortunately, for several versions of Office for Mac, the “Data Analysis” add-in has been removed. For doing regression, our suggestion is to either use R or get a PC. If your Office for Mac allows you to install Data Analysis, that’s good; if not but you still want to do regression on Mac, one option is to install StatPlus:mac LE.<sup>1</sup> If you have other suggestions, please let us know. Thank you.

---

<sup>1</sup> <http://www.analystsoft.com/en/products/statplasmacle/>.